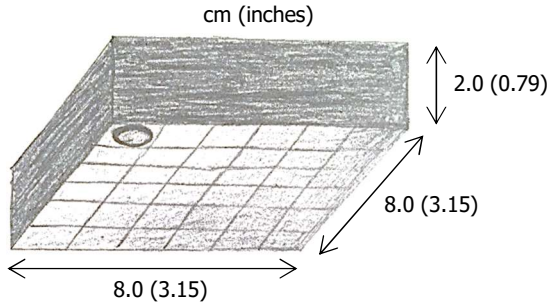
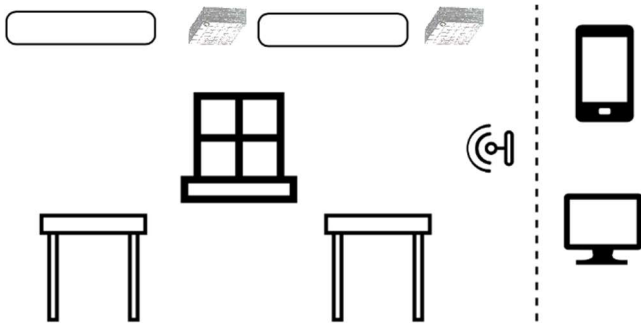


PRODUCT DATASHEET

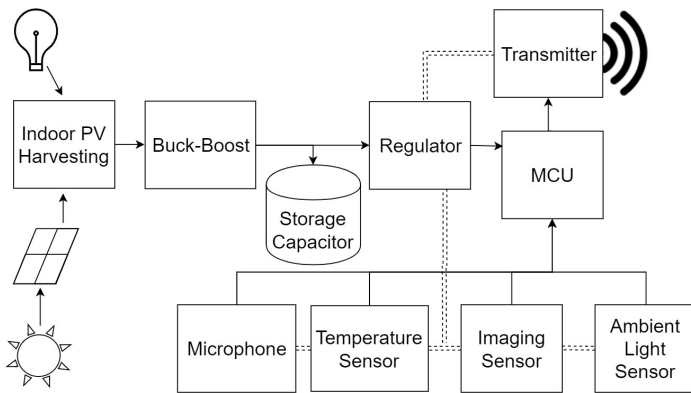
Industry Standard Dimensions



System Setup



Components of System



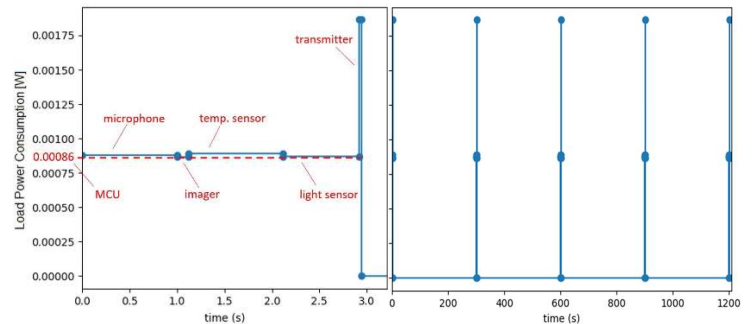
| Type | Name | Volt [V] | Active Pow [uW] | Idle Pow [uW] |
|--------------|-------------|----------|-----------------|---------------|
| Microphone | ADMP803 | 0.9 | 15.3 | 9 |
| Image sensor | Hanson_2009 | 0.5 | 1.2 | 0.7 |
| Temp sensor | TSYS02D | 1.5 | 27 | 0.03 |
| Light sensor | OPT3001DNPR | 1.6 | 5.92 | 0.48 |
| MCU | PIC16F1503 | 1.8 | 864 | 0.468 |

Specifications

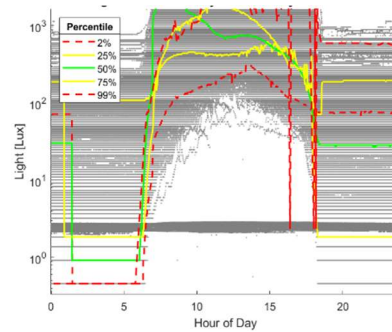
| | |
|--------------------------|---------------------------------|
| Classification: | Sensing System |
| Energy Storage: | Aluminum Electrolytic Capacitor |
| Nominal Voltage: | 3.0 Volts |
| Max Load Power: | 1.86 mW |
| Max Load Current: | 1.03 mA |
| Storage Temp: | -40°C to 85°C (-40°F to 185°F) |
| Operating Temp: | -5°C to 65°C (-23°F to 150°F) |
| Dimensions | 8 x 8 x 2 cm |

Typical Operation

Power Consumption of Load



Indoor Light Traces



Data courtesy of the Intel Berkeley Lab (containing >5 million data points from sensors in 54 locations). The Lux values for each day were averaged, and the days with average Lux values larger than 2, 25, 50, 75, and 99% of the daily Lux averages

Capacitor Voltage (based on percentile traces above)

